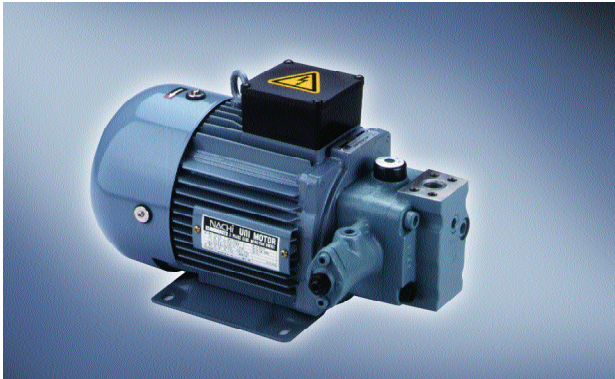




UVN Series

Variable Volume Vane Uni-Pump



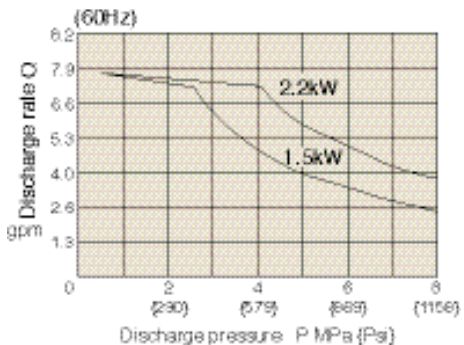
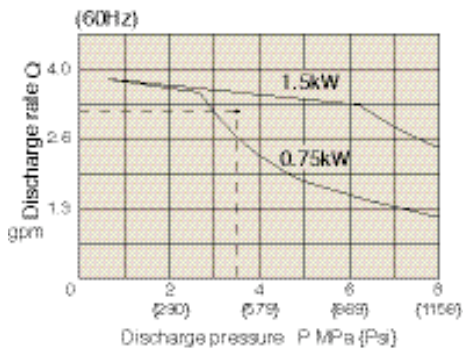
The New Uni-Pump All-in-One Pump and Motor

Get all of the power and almost none of the noise with our new Uni-Pump integrated variable vane pump and motor. Featuring our original pump and electromotor shaft connection, the Uni-Pump produces limited noise.

This compact, all-in-one type even consumes 40% less energy than standard models. Pump capacities up to 7.6gpm with 1160psi. Low heat generation results in a longer operation life.

Specifications

Model	Vane pump side		Motor side AC230V	Weight lbs.
	Delivery gpm at no load	Pressure Adjustment Range psi		
UVN-1A-0A2-0.7E-4M-11	3.8	219~562	1HPX4p	41.9
UVN-1A-0A2-1.5E-4M-11			2HPX4p	48.5
UVN-1A-0A3-0.7E-4M-11		510~872	1HPX4p	41.9
UVN-1A-0A3-1.5E-4M-11			2HPX4p	48.5
UVN-1A-0A4-0.7E-4M-11		802~1165	1HPX4p	41.9
UVN-1A-0A4-1.5E-4M-11			2HPX4p	48.5
UVN-1A-1A2-1.5E-4M-11	7.6	219~582	2HPX4p	48.5
UVN-1A-1A2-2.2E-4M-11			3HPX4p	58.4
UVN-1A-1A3-1.5E-4M-11		510~872	2HPX4p	48.5
UVN-1A-1A3-2.2E-4M-11			3HPX4p	68.4
UVN-1A-1A4-1.5E-4M-11		802~1165	2HPX4p	48.5
UVN-1A-1A4-2.2E-4M-11			3HPX4p	68.4



Motor Selection Method

The available range in the the rated output of each motor is shown below the output curve of each motor in the graph.

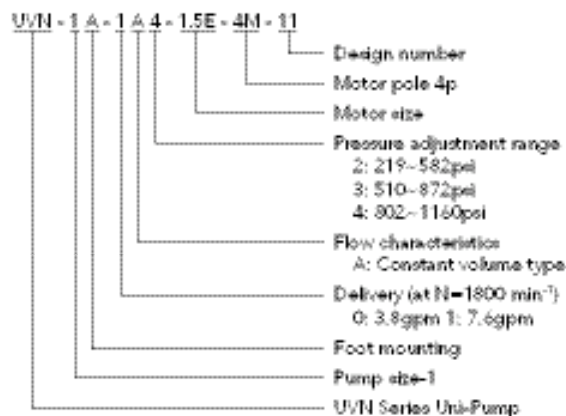
(Example)

Find the motor to be used at a pressure of 3.5MPa (507psi) discharge rate of 3.2gpm and frequency of 60Hz.

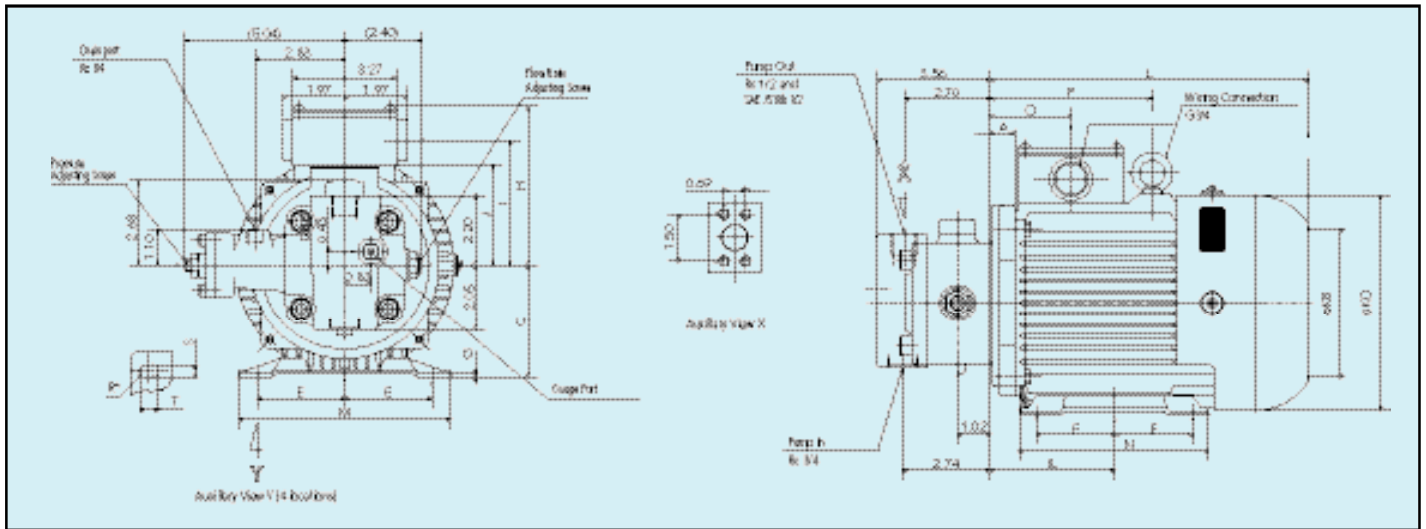
(Solution)

As illustrated by the broken line in the graph, you are looking for the motor located above the crossing port between the pressure of 3.5MPa (507psi) and discharge rate of 3.2gpm.

Model Code



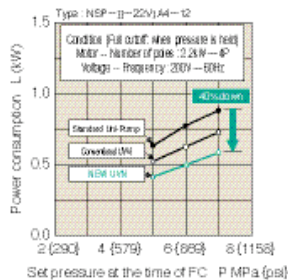
Dimensional Drawings



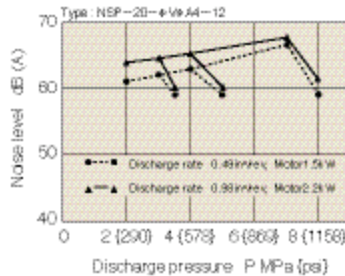
Model	Dimensions (Inch)																		
	A	IL	C	KD	E	F	G	H	J	L	M	N	TXS	R*	KB	O	P	I	
UVN-1A-*A*-0.7E-4M-11	0.79	3.54	3.15	6.18	2.46	1.97	0.09	4.72	2.80	9.06	6.10	4.72	0.59X0.39	0.20	4.33	2.56	5.12	3.62	
UVN-1A-*A*-1.5E-4M-11	0.79	3.94	3.54	6.89	2.76	2.46	0.13	5.04	3.07	10.04	6.69	5.91	0.59X0.39	0.20	4.72	2.56	5.12	3.94	
UVN-1A-*A*-2.2E-4M-11	0.79	4.33	3.94	7.68	3.15	2.76	0.13	5.43	3.46	11.22	7.87	6.50	0.67X0.47	0.24	5.28	2.56	5.31	4.33	

Performance Characteristics - When being used as NSP power unit with radiator

Power Consumption



Noise Characteristics

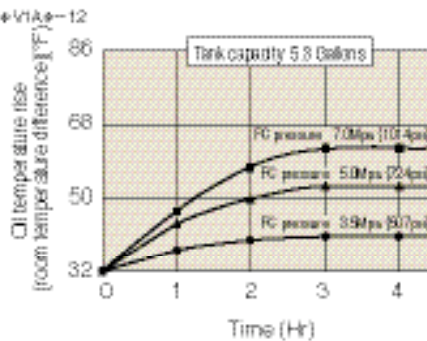
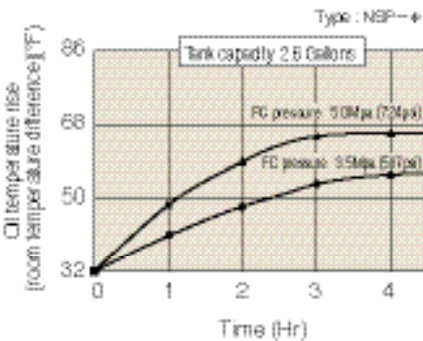


Conditions

The value in the left-hand drawing represents typical characteristics under the following conditions:
 Oil used: ISO VG32 or its equivalent
 Oil temperature: 104 +/- 41°F
 Measuring distance: 3.3 feet around the unit
 Note:

The noise characteristics depend on the installation floor base conditions and the presence of the surrounding substance reflecting the sound, and so may be different from the above description in some cases.

Oil Temperature Characteristics



Conditions

The value on the left-hand drawing represents typical characteristics under the following conditions:
 Oil used: ISO VG32 or its equivalent
 Speed: 1800 min⁻¹
 Room temperature: 84°F
 Motor: 0.75~2.2kW
 Notes:

- For 5.0MPa (724psi) of a 2.6 gallon tank. It should be noted that there is a big rise in oil temperature under continuous operation. In this case, we recommend use of a 5.3 gallon tank.
- Rise of oil temperature depends on the conditions of using an actual machine, and so may be different from the above description in some cases.

NACHI

NACHI AMERICA INC.

17500 23 Mile Road, Macomb, MI 48044

Tel. (800)622-4410 Fax. (586)226-5289